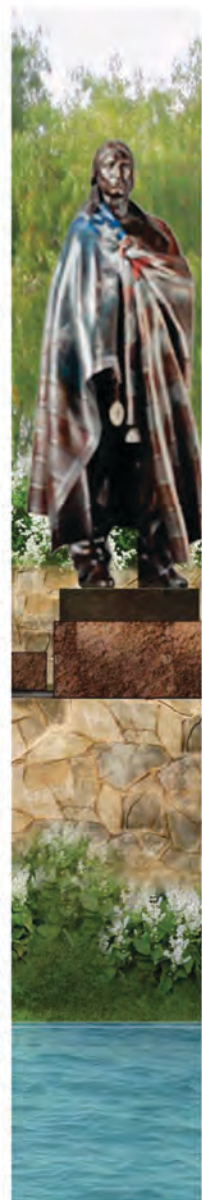


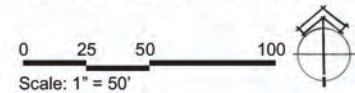
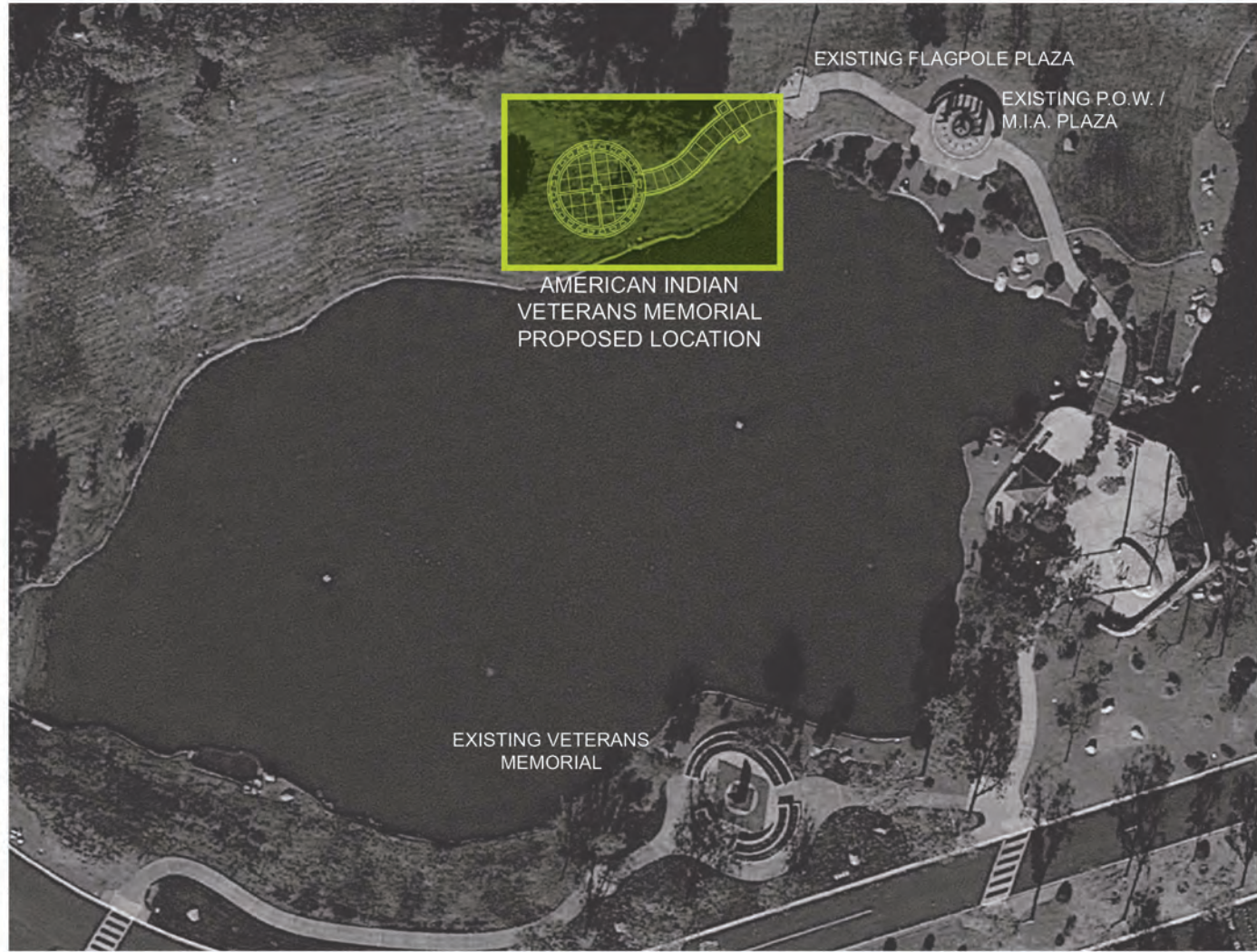
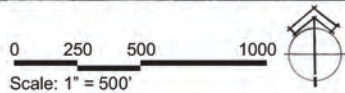
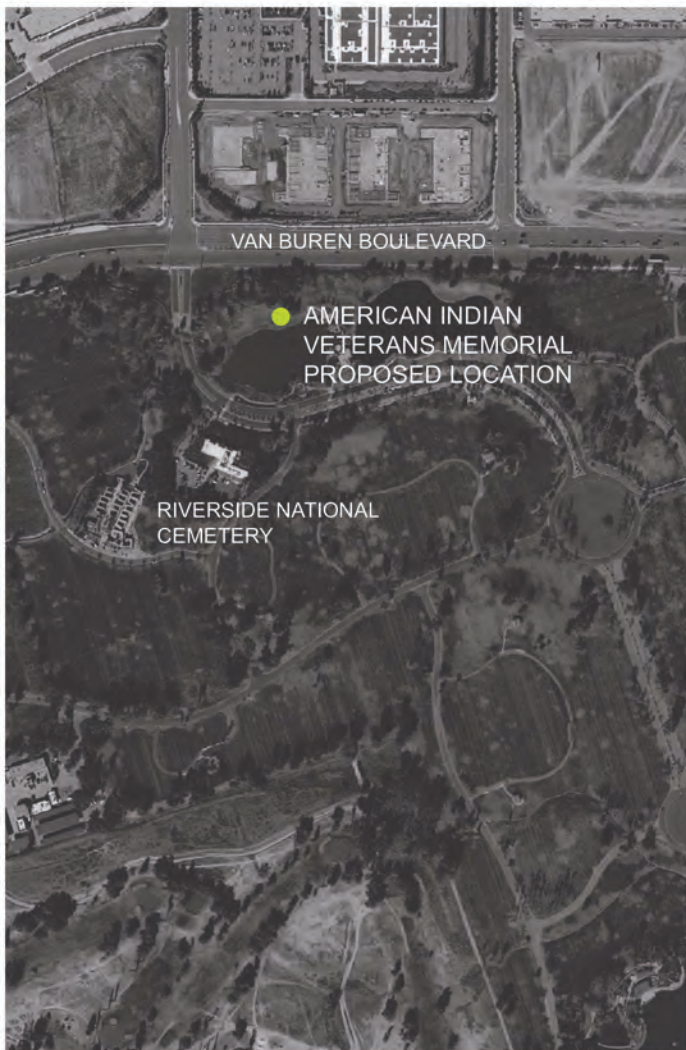
The American Indian Veterans Memorial is designed to honor and respect both the service and sacrifice of American Indian soldiers who have served in the United States military.

In commemorative remembrance of their noble sacrifices from 1776 through the present, the proposed memorial site at Riverside National Cemetery is an appropriate way to honor their dedication and loyalty toward our nation with a design that is culturally significant and representative of the American Indian people.



American Indian Veterans Memorial- Concept Design

COVER SHEET



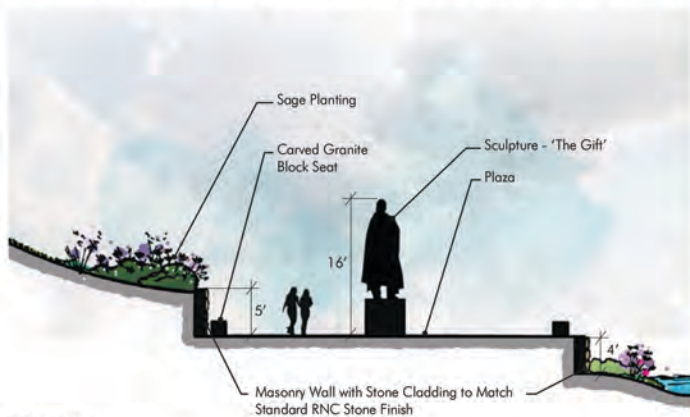
American Indian Veterans Memorial- Concept Design



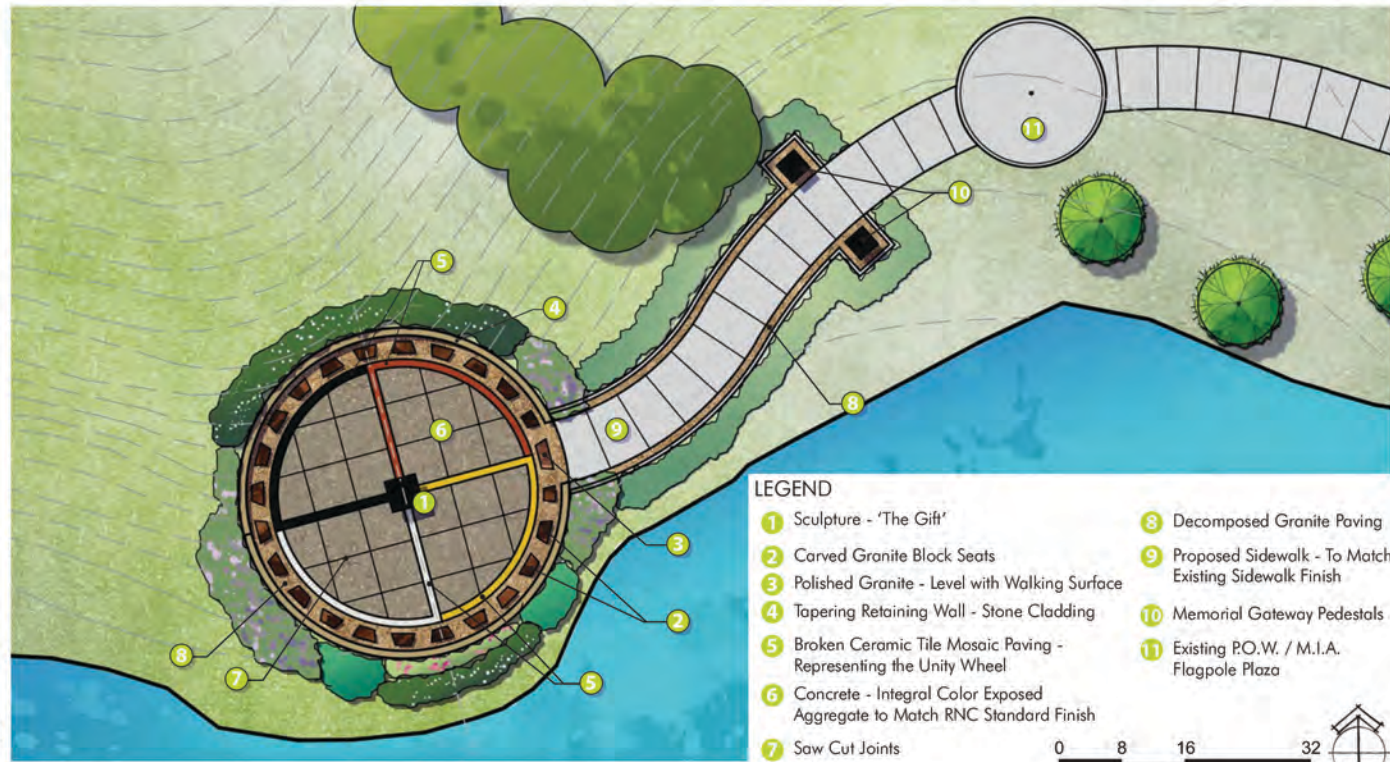
PERSPECTIVE

The proposed American Indian Veterans Memorial will be the fourth major memorial at the Riverside National Cemetery. It will honor and recognize American Indians for their unwavering service and devotion to our country.

In honor of those who served, the sculpture entitled, 'The Gift' will be in alignment with the Veterans Memorial that it overlooks across the lake, and a short walk from the adjacent flagpole and P.O.W./M.I.A. Plazas.



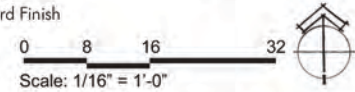
SECTION



SITE PLAN

LEGEND

- 1 Sculpture - 'The Gift'
- 2 Carved Granite Block Seats
- 3 Polished Granite - Level with Walking Surface
- 4 Tapering Retaining Wall - Stone Cladding
- 5 Broken Ceramic Tile Mosaic Paving - Representing the Unity Wheel
- 6 Concrete - Integral Color Exposed Aggregate to Match RNC Standard Finish
- 7 Saw Cut Joints
- 8 Decomposed Granite Paving
- 9 Proposed Sidewalk - To Match Existing Sidewalk Finish
- 10 Memorial Gateway Pedestals
- 11 Existing P.O.W. / M.I.A. Flagpole Plaza



American Indian Veterans Memorial- Concept Design

CONCEPT



GATEWAY ENTRY



AMERICAN INDIAN VETERANS MEMORIAL - PLAZA
American Indian Veterans Memorial- Concept Design

Journey from the Prisoner of War/Missing in Action Memorial to the American Indian Veterans Memorial - At its center is a bronze statue likeness of an American Indian warrior cloaked with the American Flag.



AXONOMETRIC PERSPECTIVE

ESTABLISHING THE Cultural Connection

Ties to the rich culture of American Indians are revealed through the proposed use of several key elements of the design: sage plantings, eagles, ceramics, and the unity wheel.

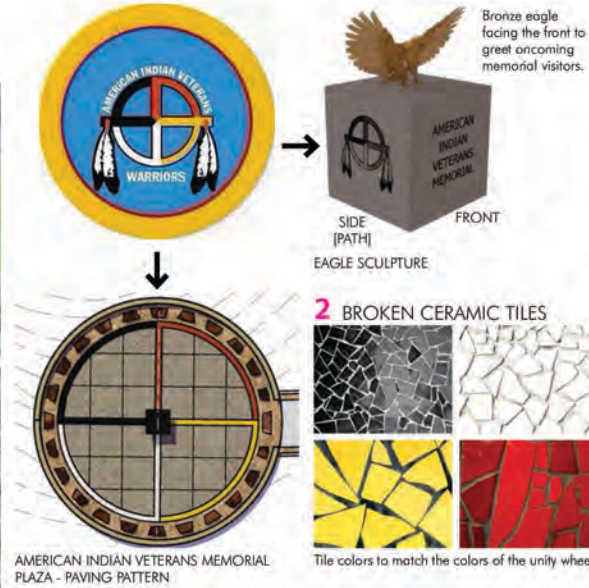
Sage has ceremonial and spiritual significance to the American Indian people - to acknowledge this, sage plantings flank the gateway entry, continue down the path, and surround the American Indian Veterans Memorial plaza at the path's terminus.

Bronze eagles sit atop black granite pedestals on both sides of the gateway entry, as a tie-in to both American Indian reverence for these creatures as sacred and ceremonial, and as the U.S.A.'s national bird.

Ceramic tiles are a component of the memorial plaza's paving as a nod to the unique artistry of American Indians.

The Unity Wheel is reflected in the plaza's paving pattern and the embossed granite pedestals of the gateway entry.

1 SAGE PLANTING



UNITY WHEEL

The form of a circle, or wheel, is often used in indigenous culture. Sometimes it is called a medicine wheel or spirit wheel. The four sections frequently represent various beliefs, seasons, healing, and other ideas. American Indian military veterans requested that the wheel for the American Indian Veterans Memorial represent the unity of the four races who work together to protect our country. The unity wheel is also embossed on the interior side of both pedestals flanking the gateway entry walk. Embossed text on the front names the memorial, and bronze eagles rest on top of both pedestals.

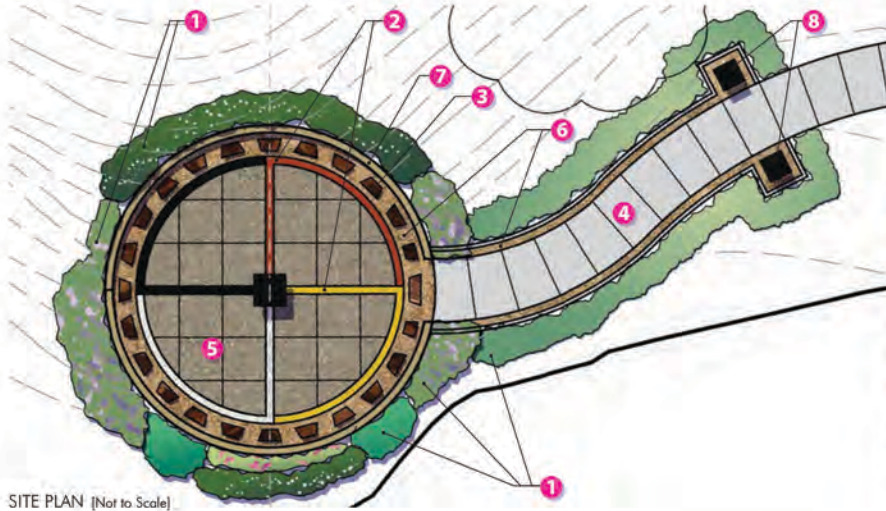
These fragmented ceramic tiles are placed in a mosaic-style layout within the memorial plaza paving to be reminiscent of the unity wheel. The four colors of this significant symbol are used, with the memorial sculpture at the center.

MATERIALS

The materials proposed for the American Indian Veterans Memorial are a mixture of materials already used on the cemetery grounds and new materials that are unique to this memorial, further enhancing the aesthetic quality of the site.

Carved granite block seats encircle the memorial plaza, providing seating for visitors to face the center sculpture. The seating surface is a polished granite, while the rest of the granite sides will remain a raw, textured finish.

As a nod to the rich culture of American Indians, both the plaza and the memorial gateway entry will be surrounded by sage plantings that reflect their cultural meaning to the American Indian people.



3 CARVED GRANITE BLOCK SEATS



Granite - Agate 'Polish' [On Seat Wall Tops]



Granite - Agate 'Thermal' [On Seat Wall Sides]

4 CONCRETE PAVING



To match existing sidewalk finish at RNC

5 CONCRETE PAVING: INTEGRAL COLOR EXPOSED AGGREGATE



To match existing paving finish used at RNC

6 DECOMPOSED GRANITE



Color to match the hardscape

7 RETAINING WALLS



Stone cladding on walls to match existing stone cladding used at RNC

8 SCULPTURE



Bronze Sculpture with Granite Pedestal Base